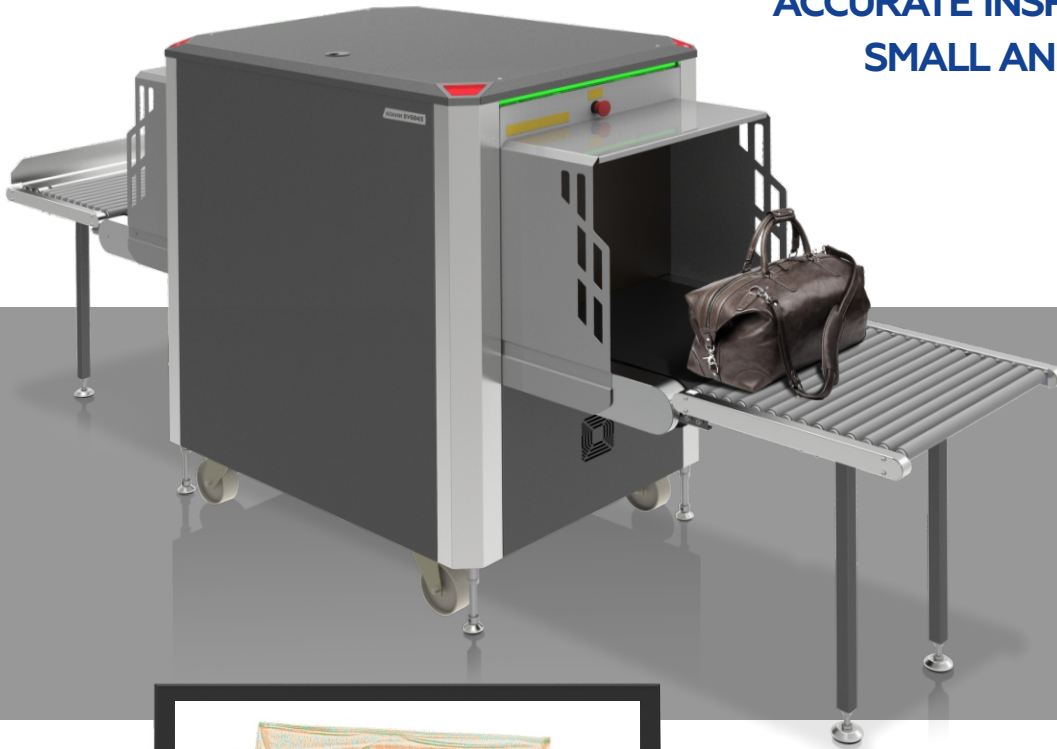


**OPTIMAL SOLUTION FOR QUICK AND
ACCURATE INSPECTION OF PARCELS,
SMALL AND MID-SIZE BAGGAGE**



X-RAY BAGGAGE INSPECTION

BV 6045



The BV 6045 is a reliable, optimal and cost-effective security solution which provides enhanced threat and contraband detection capabilities. The system is intended to make security screening process effective, fast and at most automated.

Due to its optimal tunnel size configuration, the system can be used at any facilities and within any application scenario. It does not require any additional security infrastructure and if necessary can be easily relocated.

High image quality in combination with advanced image processing tools and threat detection assistance software allows the operator to quickly and effectively evaluate any luggage content without any negative impact on throughput capacity.



**BORDER CROSSINGS
TRANSPORTATION FACILITIES**



**SECURITY CHECKPOINTS
CORRECTIONAL FACILITIES**



**GOVERNMENTAL BUILDINGS
COURT HOUSES**



**BANKS
HOTEL COMPLEXES**



**CRUISE SHIPS
CRITICAL INFRASTRUCTURE**



ADANI

Product comply with applicable international health and safety regulations including USA FDA X-ray systems (Federal Standard 21CFR 1020.40)

www.adanisystems.com

info@adanisystems.com

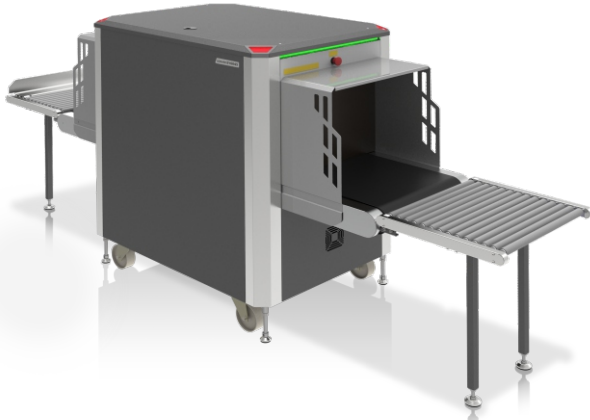


ADANI

from ideas to solutions

X-RAY BAGGAGE INSPECTION

BV 6045



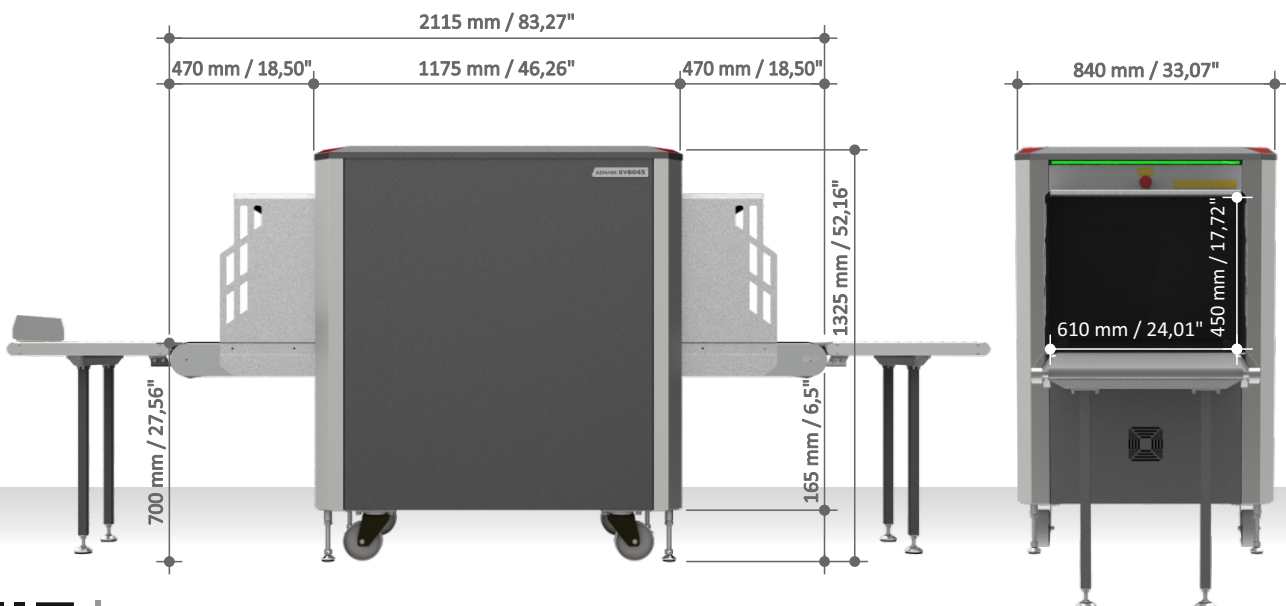
- ▶ **PROVED RELIABILITY**
- ▶ **AUTOMATIC DETECTION OF SUSPICIOUS ITEMS**
- ▶ **HIGH THROUGHPUT CAPACITY**
- ▶ **EXCELLENT IMAGE QUALITY**
- ▶ **EVIDENT MATERIAL DISCRIMINATION**
- ▶ **EASY-TO-OPERATE AND USER-FRIENDLY**
- ▶ **INTERFACE**
- ▶ **DUAL-ENERGY X-RAY DETECTOR**
- ▶ **AUTOMATIC SYSTEM PERFORMANCE**
- ▶ **DIAGNOSTICS**

Specifications

Tunnel dimensions (WxH)	610 x 450 mm 24,01" x 17,72"
Conveyor speed	0,22 ± 0,03 m/s
Maximum distributed load on the conveyor	180 kg
Generator	160 kV operating at 140 kV
Steel penetration	Standard 30 mm / 1,1811" Typical 36 mm / 1,41732"
Wire detectability	40 AWG
Dual-energy detector	Yes
Number of colors within the X-ray image	4
Dimensions (LxWxH)	2115 x 840 x 1325 mm 83,27" x 33,07" x 52,16"
Weight	410 kg

List of software features available to an operator

- ▶ Automatic gun detection
- ▶ High density objects alarm feature
- ▶ Outlining of dangerous objects (which could be identified as drugs, explosives and weapons)
- ▶ Highlighting of objects with calculated atomic numbers of 7, 8, and 9 intended to assist operator with threat detection Threat Image Projection function (TIP)
- ▶ Pseudo-coloring of images
- ▶ Contrast adjusting of strongly absorbing objects
- ▶ Optimization of the overall contrast: combination of edge enhancement and local contrast enhancement algorithms
- ▶ Gamma-correction of images
- ▶ Images inversion
- ▶ Zooming in (up to 96x)
- ▶ Quick system start-up (about 10 sec)
- ▶ Image scrolling



With continual development of our products
ADANI reserves the right to make changes to the design
and specifications at any moment and without notice

