

**BV 100100TB IS ESPECIALLY  
DESIGNED FOR QUICK, ACCURATE  
AND HANDSFREE INSPECTION  
OF BAGGAGE AND SMALL CARGO**

This X-ray scanner offers a sophisticated technology, large tunnel size and minimum inspection time with no need for unpacking and opening the inspected objects.

# BV 100100TB



The BV 100100TB system is a very convenient and effective solution for sites where large baggage and small cargo control is required. This X-ray machine has an easy loading design with a lower deck pallet of just 300 mm (11.81")

This security system meets the requirements of customs facilities, airports, logistics companies or wherever security screening of heavy packages is required. The X-ray machine guarantees high throughput and effective screening.

## APPLICATION AREAS



AIRPORTS



CUSTOMS



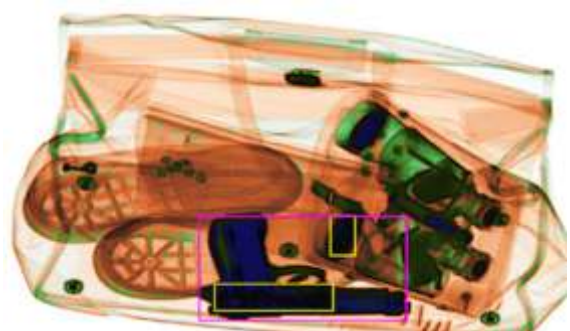
LOGISTICS CENTERS



WAREHOUSES



SEA PORTS



## SPECIFICATIONS

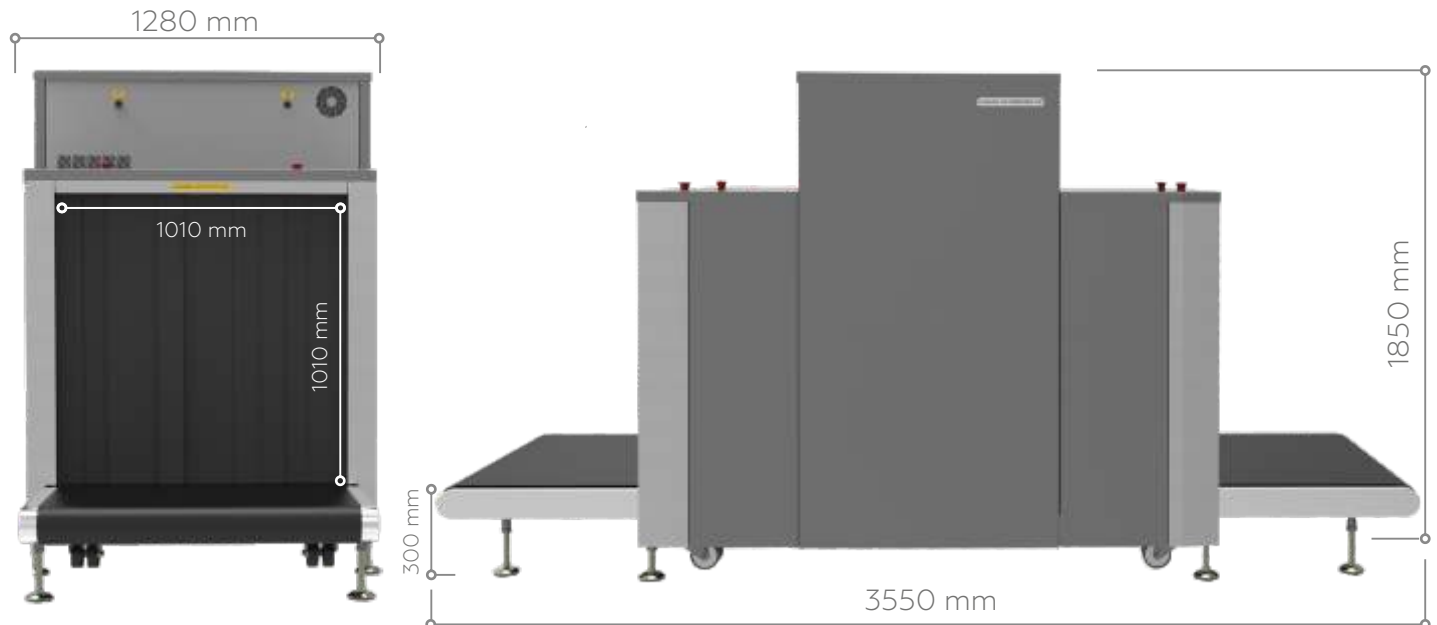
Tunnel dimensions (WxH)	1010x1010 mm [39.76"x 39.76"]
Conveyor height	300 mm [11.81"]
Max. distributed load	200 kg [440 lbs]
Anode voltage	160 kV
- standard operating mode	140 kV
Angle of radiation	74°
Steel penetration	34 mm [1.33"]
Wire detectability	38 AWG
Detector type	dual-energy
Number of colors within the X-ray image	4
Dimensions [LxWxH]	3550 x 1280 x 1850 mm [139.76"x 50.39"x 72.83"]
Weight	950 kg [2094 lbs]



## INSTALLATION REQUIREMENTS

Operating temperature	+10 - +35°C
Humidity	up to 90%
Power supply	230 VAC ± 10%, 50/60 Hz
Power consumption	Max 1.0 kVA
Ambient dose at 0.1 m distance	≤ 1μSv/hr

# BV 100100TB



0126-SA12012016