

IT IS ESPECIALLY DESIGNED FOR CUSTOMERS
REQUIRING THE INSPECTION OF
CHECK-IN ROLLING BAGGAGE, HANDBAGS, BOXES
AND PARCELS WITHOUT OPENING THEM



X-RAY BAGGAGE INSPECTION

BV 6080

ADANI BV 6080 is provided with dual energy features, threat detection algorithms, adjustable density alert function, enhanced archive and TIP features. An ergonomic workstation with operator console provides easy-of-use operation.

ADANI BV 6080 allows identification of weapons, explosives (including plastic explosives), drugs, primers and dangerous objects, which are safety hazard.



**BORDER CROSSINGS
TRANSPORTATION FACILITIES**



AIRPORTS



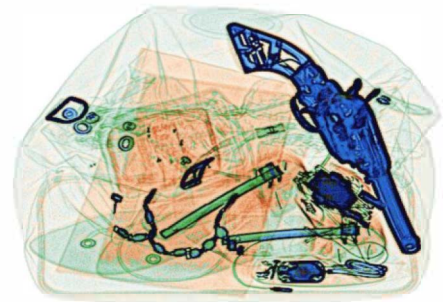
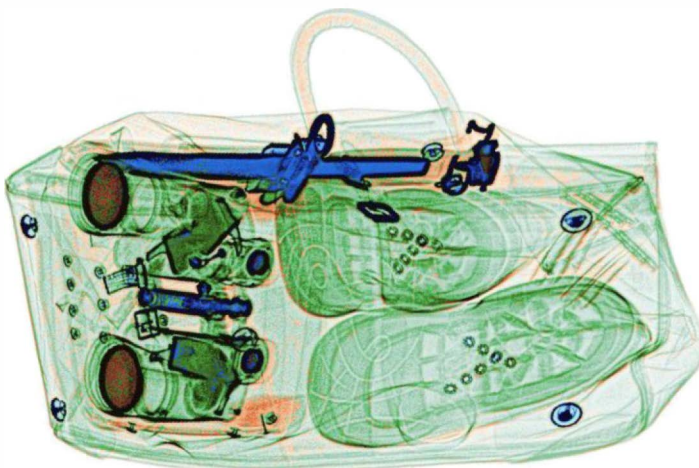
**SECURITY CHECKPOINTS
CORRECTIONAL FACILITIES**



**GOVERNMENTAL BUILDINGS
COURT HOUSES**



**BANKS
HOTEL COMPLEXES**



EXCLUSIVE SUPPLIER FOR ITALY
FLY TECHNOLOGIES
www.flytechnologies.eu
sales@flytechnologies.eu

Product comply with applicable international health and safety regulations
including USA FDA X-ray systems (Federal Standard 21CFR 1020.40)



ADANI
from ideas to solutions

KEY FEATURES

- ▶ PROVEN RELIABILITY
- ▶ SIMPLE INTERFACE
- ▶ EASY TO USE AND HIGHLY EFFECTIVE
- ▶ REAL-TIME SELF-DIAGNOSTICS
- ▶ AUTOMATIC IDENTIFICATION OF SUSPICIOUS OBJECTS
- ▶ MULTILANGUAGE INTERFACE
- ▶ QUICK START-UP AND SHUTDOWN
- ▶ THE FAULT-TOLERANT CONFIGURATION OF THE SYSTEM

OPTIONS

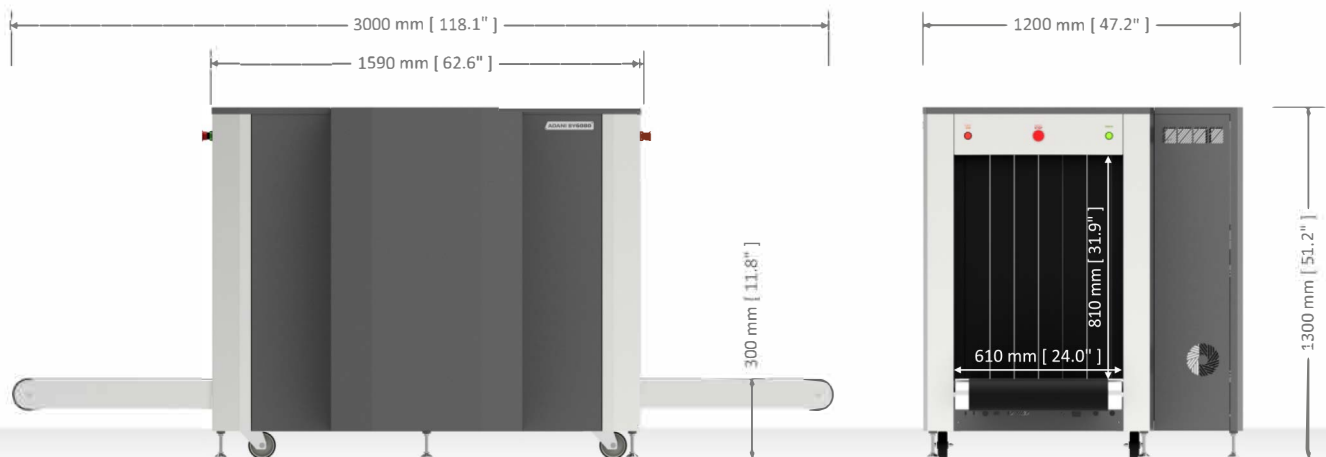
- ▶ ENTRY / EXIT ROLLERS OF VARIOUS LENGTH
- ▶ OPERATOR'S DESK
- ▶ SET OF TEST OBJECTS
- ▶ TWO MONITOR FUNCTIONALITY
- ▶ TOUCHSCREEN OPERATION FUNCTIONALITY
- ▶ RAMP
- ▶ UNINTERRUPTIBLE POWER SUPPLY

Specifications

Tunnel dimensions (WxH)	610 x 810 mm [24.0" x 31.9"]
Conveyor speed	0,22 ± 0,03 m/s [0.49 ± 0.06 mph]
Load on the conveyor	Max 180 kg [397 lbs]
Anode	Standard 140 kV / High 160 kV
Steel penetration in high mode	GUARANTEED 34 mm [1.33"] TYPICAL 36 mm [1.41"]
Wire detectability	0.08 mm (40 AWG)
Dual-energy detector	Yes
Number of colors within the X-ray image	7 and 3
Dimensions (LxWxH)	3000 x 1200 x 1300 mm [118.1" x 47.2" x 51.2"]
Weight	700 kg [1995 lbs]
Power Supply	120/230 VAC ± 5%, 50/60 Hz
Power Consumption	Max 0,9 kVA
Operating temperature	from 0° to + 40 °C
Humidity	up to 90%, non condensing

List of software features available to an operator

- ▶ Automatically calibrating and normalizing the X-ray detector
- ▶ Highlighting optically dense objects
- ▶ Adjusting contrast of strongly absorbing objects
- ▶ Inverting images
- ▶ Gamma-correction of images
- ▶ Optimizing the overall contrast
- ▶ Coloring substances with atomic numbers from a selected range
- ▶ Pseudocoloring objects
- ▶ Displaying organic objects with atomic numbers equal to 7, 8, and 9
- ▶ Displaying substances according to a selected range of signal strength
- ▶ Zooming images up to 96x
- ▶ Automatically saving X-ray images in archive
- ▶ Browsing the image (JPEG format) archive
- ▶ Copying images on external storage media
- ▶ TIP
- ▶ Counting inspected baggage
- ▶ Preparing service reports



EXCLUSIVE SUPPLIER FOR ITALY FLY TECHNOLOGIES

www.flytechnologies.eu
sales@flytechnologies.eu

Compliant with standards for cabinet X-ray systems
(USFDA, Center for Devices and Radiation Health, 21-CFR 1020.40)
Typical radiation leakage is less than 0.1 mR/hr (1 µSv/hr)
(Leakage less than 0.5 mR/hr permitted by the Federal Standard)
Guaranteed even for high speed films up to ISO 1600 (33 DIN)

With continual development of our products ADANI reserves the right to make changes to the design and specifications at any moment and without notice.



Authorized Representative in EU/EC

ADANI Ltd.
45 Pall Mall
London SW1Y 5JG,
United Kingdom
+44 333 577 9813