

**ADVANCED SECURITY SOLUTION
WITH ENHANCED DETECTION CAPABILITIES
FOR FAST, SAFE AND PRECISE SCREENING**



FULL BODY SECURITY SCREENING SYSTEM

COMPASS DV DUAL VIEW

FAST

7 second scan

SAFE

Meets ANSI 43.17.2009 standard

FLEXIBLE

3 different scan settings for Single and Dual View modes
Software fully compatible with most access control systems
Built-in privacy masking software
Multi-screen and remote viewing compatible
Automatic drug detection software DRUGUARD



NARCOTICS IN BODY CAVITIES



PRECIOUS STONES AND RARE METALS



ELECTRONICS AND DETONATORS



EXPLOSIVES AND LIQUIDS

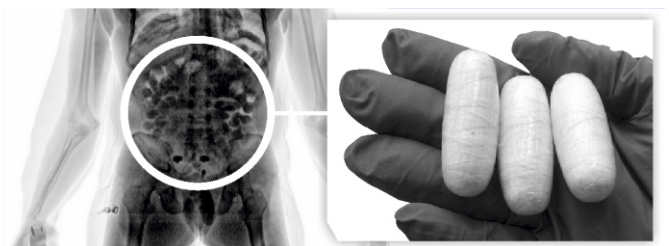
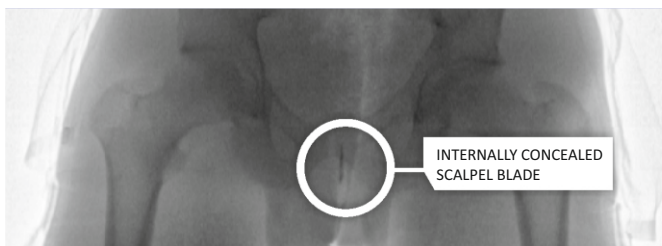


CERAMIC AND PLASTIC BLADES



WEAPONS

Provides two independent views improving operator's detection capability



ADANI

www.adanisystems.com
info@adanisystems.com



ADANI

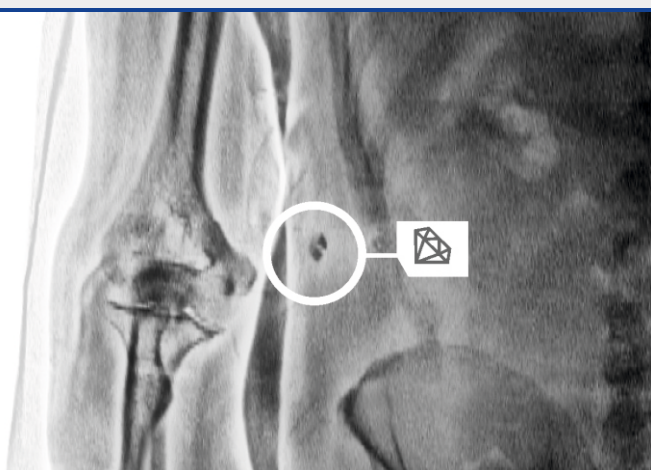
from ideas to solutions

FULL BODY SECURITY SCREENING SYSTEM

COMPASS DV

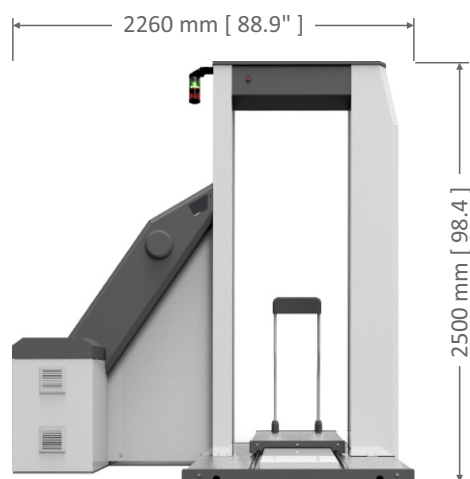
Specifications

Dimensions, LxWxH	2260 mm x 2000 mm x 2500 mm [88.9" x 78.7" x 98.4"]	Image enhancement	Automatic optimization, zoom, b/w reverse, edge enhance, color overlay, brightness/contrast
Weight	1050 kg [2314 lbs]	X-ray dose per inspection	Fully adjustable 0.10 μ Sv – 4.5 μ Sv - 0.25 μ Sv typical for single view, - 2.0 μ Sv typical for dual view
Scanning speed	7 seconds	Digital X-ray detector	896 / 1344 pixel, L-shaped [Full], 448 pixel, linear [Torso]
Platform capacity	300 kg [660 lbs]	Wire detectability	32 AWG typical [Full], 38 AWG typical [Torso]
Duty cycle	100% - 24 hrs cont. operation	Scanning modes	3 independently configurable modes plus on/off toggle of Dual View [6 total]
Operating temperature	0°-45°C [32°-113°F]	Software	Windows compatible
Humidity	10% - 90% [non-condensing]		
Power supply	110-230 VAC, 50/60 Hz, 1.5 kVA		
Image Display	24" 1080P LED [Full], 19" 1080P LCD [Torso] touch screen optional		



Highlighted options

Network	Integration with Data Management System Server for additional data storage
Data input	Barcode, RFID, passport reader, other
Camera / CCTV	Surveillance photo and video storage
Radiation protection	Lead shield with window [36" w x 72" H] and/or shielded cabin



... THE MOST
FLEXIBLE
BODY SCANNER
AVAILABLE