

X-RAY SHIELDING CABIN FOR USE IN SPACE LIMITED LOCATIONS



PEOPLE X-RAY SCREENING

COMPASS X-RAY SHIELDING CABIN

- ▶ COMPASS X-ray Shielding Cabin is designed for crowded locations where there is a need to minimize or eliminate the X-ray safety zone around the COMPASS
- ▶ Front and back sliding doors allow the cabin to be used in a variety of operational scenarios
- ▶ Optional X-ray protective glass windows allow operators to maintain light of sight of scanned individuals at all times
- ▶ Door interlocks insure radiation safety outside the cabin and provide protection should a door be opened during operation
- ▶ Equivalent lead penetration allows the operators and bystanders to be in close proximity to the X-ray scanning system without any harm



JAILS AND PRISONS



SECURITY CHECKPOINTS



GOVERNMENT BUILDINGS



CRITICAL INFRASTRUCTURE



INDUSTRIAL SECURITY



ADANI

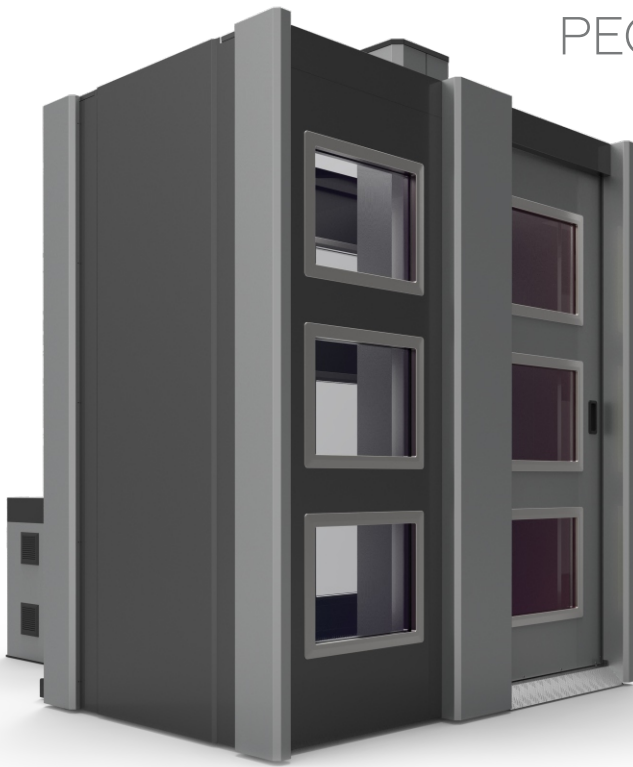
www.adanisystems.com
info@adanisystems.com



ADANI
from ideas to solutions

PEOPLE X-RAY SCREENING

COMPASS X-RAY SHIELDING CABIN



Specifications

Overall dimensions (LxWxH)	1960 x 1100 x 2255 mm [77.2" x 43.8" x 88.8"]
Weight	1000 kg [2204 lbs]
Number of windows	Optional, up to 12
Sliding doors control	Manual

The COMPASS X-ray Shielding Cabin is the best solution for crowded areas and locations where there is a need to minimize the radiation safety zone.

The cabin can be integrated with various data gathering devices such as CCTV cameras, access control systems and others.

